



17th June 2023

LGS Newsletter 164.15

LGS Field excursions

Title: Exploring (some of) the igneous & metamorphic rocks on Anglesey

Field Excursion Leaders: Maggie Williams, Peter Williams, Hazel Clark

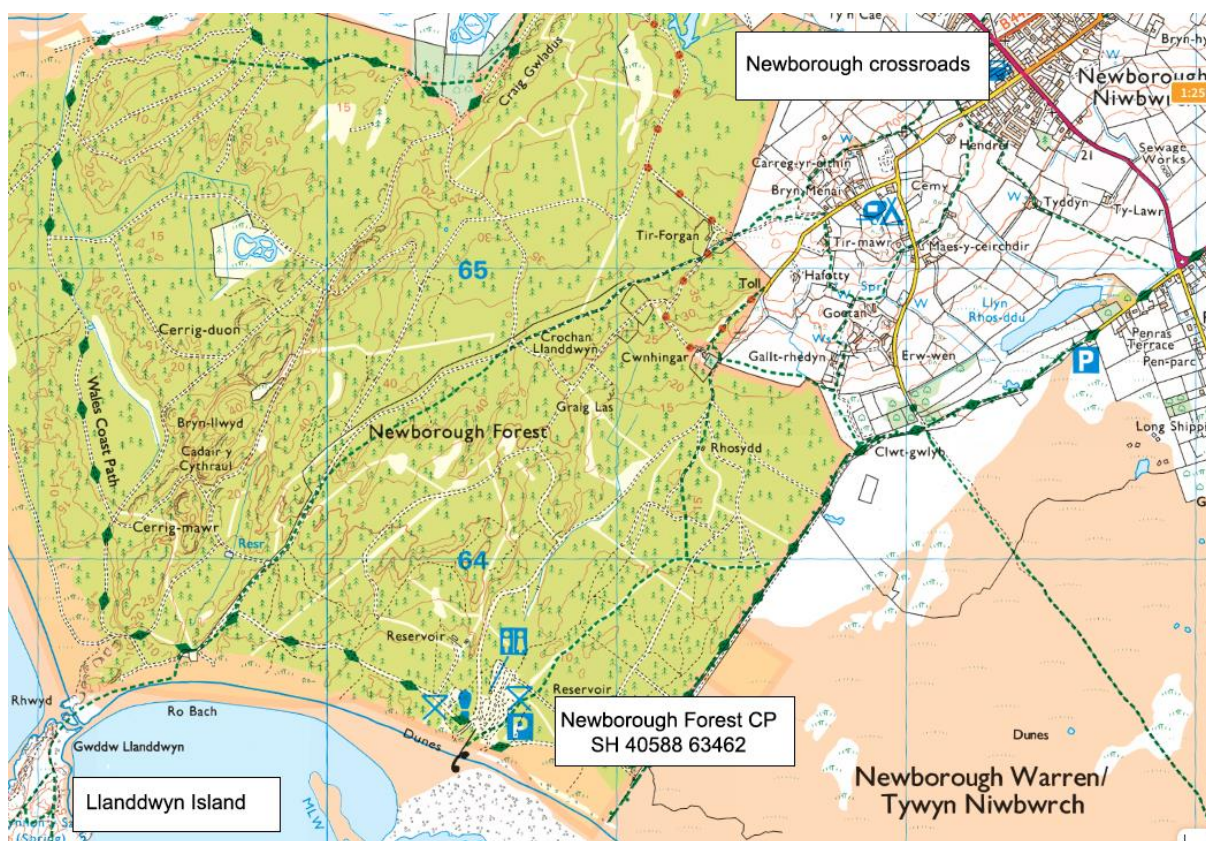
Dates: Saturday 1st July and Sunday 2nd July 2023

Saturday 1st July: Llanddwyn Island, Newborough, Anglesey

Start time: 10.30 am.

Approximate finishing time: 3.00 pm.

Meeting place: Newborough Forest car park [SH 40588 63462]



Car parking charges: The car park has entrance and exit barriers and an Automatic Number Plate Recognition (ANPR) camera. The ANPR camera reads your vehicle registration number on arrival, and you pay the parking charge on departure. You are charged for the length of time you park:

- £2 for the first 2 hours
- 40p for every additional 20 minutes
- £7 maximum charge per day

Payment by card or cash at the exit barrier as you drive out of the car park.

Approximate walking distances: 5 km.

Terrain: The walk starts on the beach near the car park. The rest of the route is mostly on the beach or along a footpath along the edge of Newborough Forest. There is a steeper walk on the footpaths across Llanddwyn Island. There are public toilet facilities at the start and end of the walk.

Clothing and equipment needed: Walking boots, safety helmet, clothing suitable for the forecast weather conditions. Bring a rucksack, packed lunch and drinking water - there are no café facilities on site or close by. If windy, there is a chance of blowing fine grained sand, so people wearing contact lenses may wish to bring glasses just in case.

Aim(s) of the visit: We will visit three key localities to observe various rocks of the Gwna Group and its intrusions.

If you wish to reserve a place on this excursion, please contact Maggie Williams by email lgsecretary19@gmail.com

Sunday 2nd July: Porth y Post and Breakwater Country Park

Start time: 10.30 am.

Approximate finishing time: 3.00 pm.

Meeting place: Trearddur Bay car park [SH 25617 78987]. We will aim to leave some cars here and share cars to our first locality (Porth y Post), where limited parking space is available. We will return to Trearddur Bay to pick up cars to drive to our second locality (Holyhead Breakwater Country Park).



Car parking charges:

- 1 Hour £1.00

- 2 Hours £3.00
- 4 Hours £6.00

This is a pay & display car park. Payment by cash or 'phone.

Approximate walking distance: 2 km

Terrain: The walk at Porth y Post is along the beach. The route we will follow around Holyhead Breakwater Country Park is along easy footpaths. There are public toilet facilities at Treaddur Bay and at Holyhead Breakwater Country Park.

Clothing and equipment needed: Walking boots, safety helmet, clothing suitable for the forecast weather conditions. Bring a rucksack, packed lunch and drinking water. There are café facilities in the Holyhead Breakwater Country Park.

Aim(s) of the day: We will visit Porth y Post [SH 243 795] to look at Tertiary dolerite dykes that have been intruded into schists in the New Harbour Formation. We will also visit the Holyhead Breakwater Country Park [SH 225 836] to look at the Holyhead Quartzite Formation (part of the South Stack Group).

If you wish to reserve a place on this excursion, please contact Maggie Williams by email lgssecretary19@gmail.com

Title: Nant Ffrancon and the story of Ordovician super-volcanoes

Field Excursion Leader: Mike Stoddart

Date: Saturday 8th July 2023

Start time: 10.30 am

Approximate finish time: 2.30 pm – including a pause for lunch and toilets at Ogwen Cottage

Approximate walking distance in km: 6.5 km

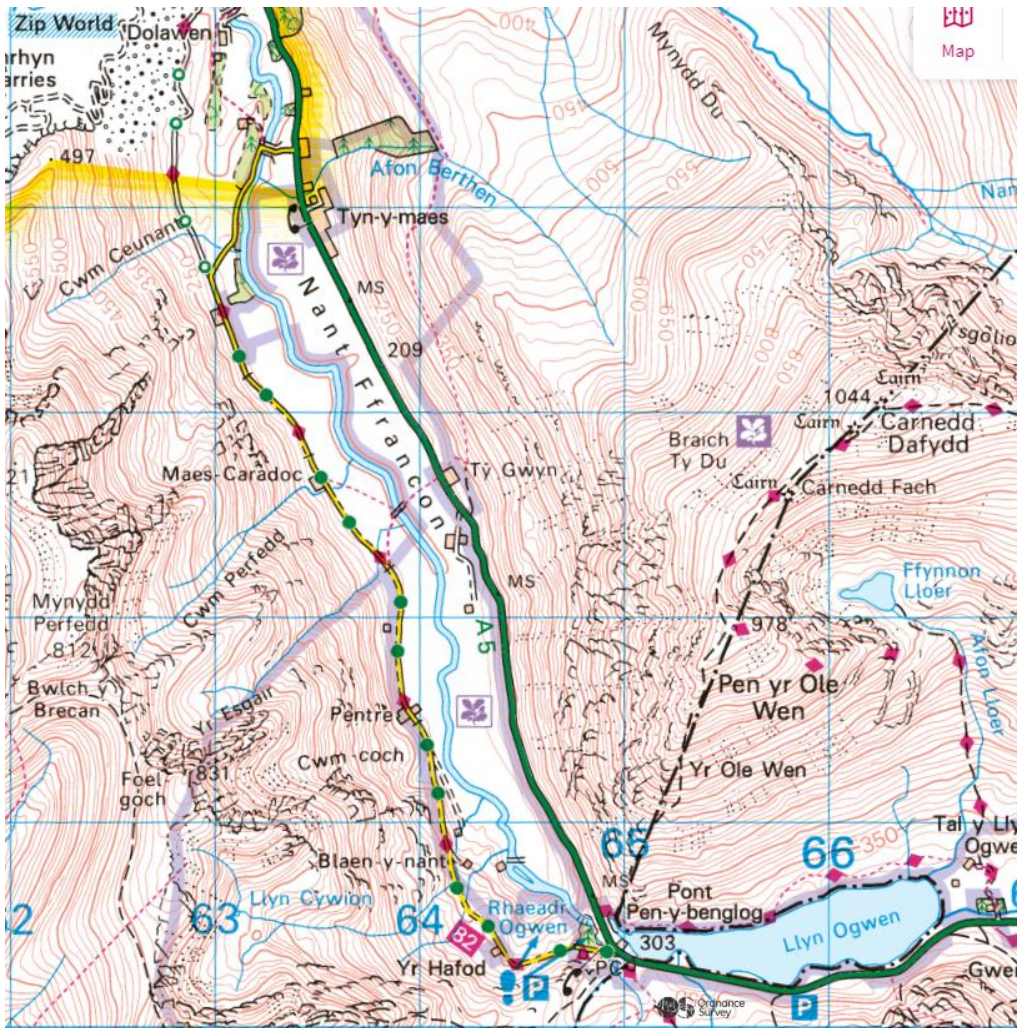
Terrain: Mainly flat but with some gentle road undulation (Approximately 50m of elevation change from lowest to highest point). Some grassy slopes to be navigated near Ogwen Cottage.

Meeting place (place name, post code, grid reference): Layby on the A5 just south of Ty Gwyn, halfway along Nant Ffrancon, Postcode is LL57 3LX although this covers a large proportion of the valley. Grid reference is 53° 08' 28.38" N, 4° 01' 49.13" W or (as a decimal) 53.141302 -4.0303700. The What3words location is ///variation.startles.strange. OS grid reference is SH 64288 62388.

Alternative parking is available 70 metres south along the valley at grid reference 53° 08' 26.16" N, 4° 01' 47.21" W or (as a decimal) 53.140612 -4.029733. The What3words location is //rocks.cherished.serenade. The OS grid reference is SH 64326 62310.



Car parking in layby on the A5 just south of Ty Gwyn



Car parking (for those travelling by car): As above. Parking in Snowdonia can be difficult at the weekend in the summer, so car sharing is highly recommended.

Nearest station (for those travelling by train): Bangor followed by a 20-minute taxi ride.

Clothing & equipment needed (e.g., hard hats, waterproofs, food, rucksack etc): Walking boots are advised. Waterproofs, Factor 50 suncream, packed lunch (although food is available at Ogwen Cottage) and water. Hard hats are advised if participants plan to approach vertical exposures near Blaen-y-nant farm.

Aim(s) of the day: to view the Ordovician succession of Nant Ffrancon and its glacial landforms. We will also learn about the changing interpretation of the volcanic succession and the plate tectonic settings.

If you wish to reserve a place on this excursion, please contact Maggie Williams by email lgssecretary19@gmail.com